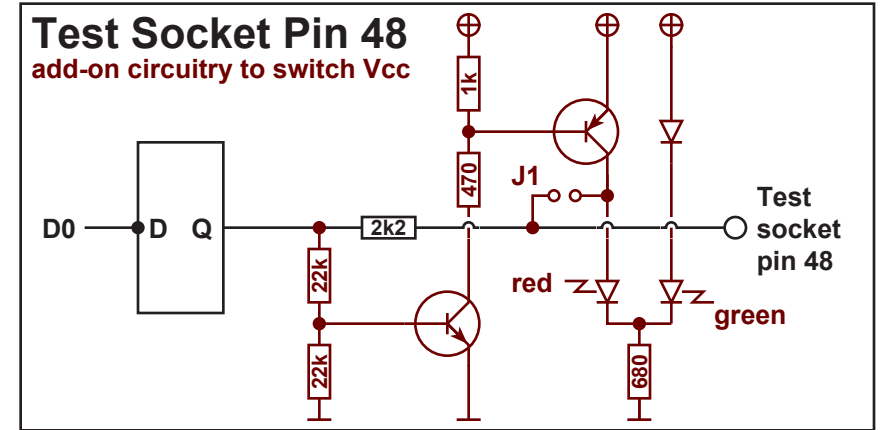
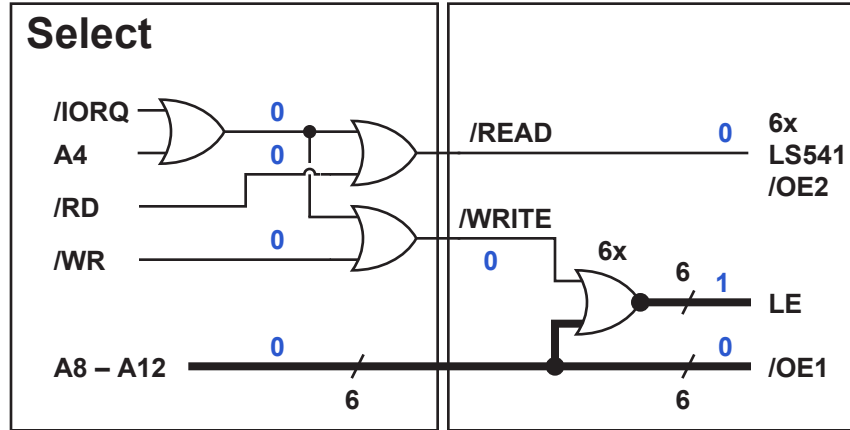
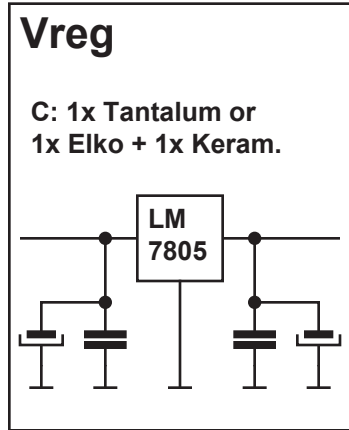


- 1x Test socket 48 pins
- 1x 74LS32 Quad OR
- 2x 74LS02 Quad NOR
- 6x 74LS373 Octal data latch
- 6x 74LS541 Octal driver

IC Tester for ZX Spectrum

Circuit and Drawing 2005 – 2006 kio@litttle-bat.de

This tester is intended to test or identify TTL logic ICs with up to 48 pins.
Pin 48 of the test socket can be connected to +5V by the ZX Spectrum program.



All pins are handled identically. Pin 48 has an additional circuit to switch +5V which can be disabled by removing a jumper.

The 48 pins are grouped into 6 groups of 8 pins. Each group is buffered by one IC 74LS373 (octal latch) and one IC 74LS541 (octal driver). There is no directional switch for the test pins. The output of the latch is decoupled from an output of the tested IC with a 2k2 ohm resistor.

The tester is selected by IN and OUT with A4 = 0.

The sub selection of the groups is done with A8 = 0 to A13 = 0. Pin 1 to 8 of each group is connected to D0 to D7 of the CPU.

Bit 7 of group A13 = 0 controls the +5V supply to pin 48.

